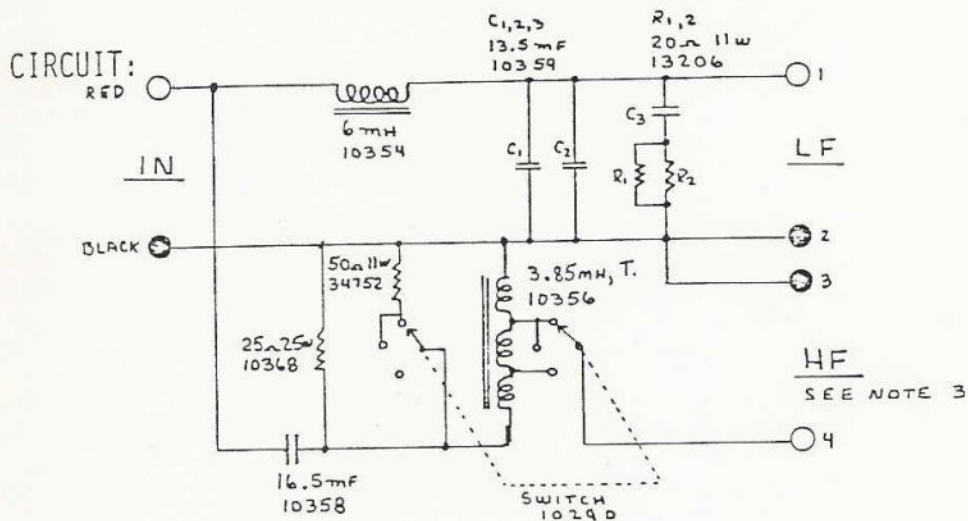


SPECIFICATIONS: NOTE ①

LOAD Z	LOW PASS	CROSS OVER	HIGH PASS	ATTENUATION
		SEE NOTE 5		



NOTES:

- ① USE STANDARD TEST FIXTURE
- 2 — serial 4258 through 4275
- 3 — terminal 3 must go to red terminal of tweeter
- 4 — parts values changed to agree with current availability
- 5 — specs should be close to later version, except for attenuation steps. No sample available for verification.